



Mount Pleasant, London  
WC1X

GARTONJONES.COM



Mount Pleasant, London  
, WC1X

GARTON JONES.COM

11 Park Street  
Chelsea Creek  
London  
SW6 2FS

Sales +44 (0) 20 7824 7090  
paul@gartonjones.com  
www.gartonjones.com

£692 Per Week

Rarely available studio apartment located at the classy Postmark development WC1. This property comprises a large bright open plan studio space 450sqft (42sqm), modern fitted kitchen & bathroom. Fantastic luxury facilities include a 24-hour VIP concierge service, private living room, cinema, rooftop terrace and bar, atrium garden, gym, sauna, treatment room, luxury swimming pool, spa. The location offers Kings Cross Thameslink Station, Russell Square Station & Farringdon Station all within half a mile away.

\*\*Please note the furniture may differ or not be included to that shown in the current photos\*\*

5 Weeks Security Deposit  
12 Month Tenancy  
Council Tax — Camden- Band E

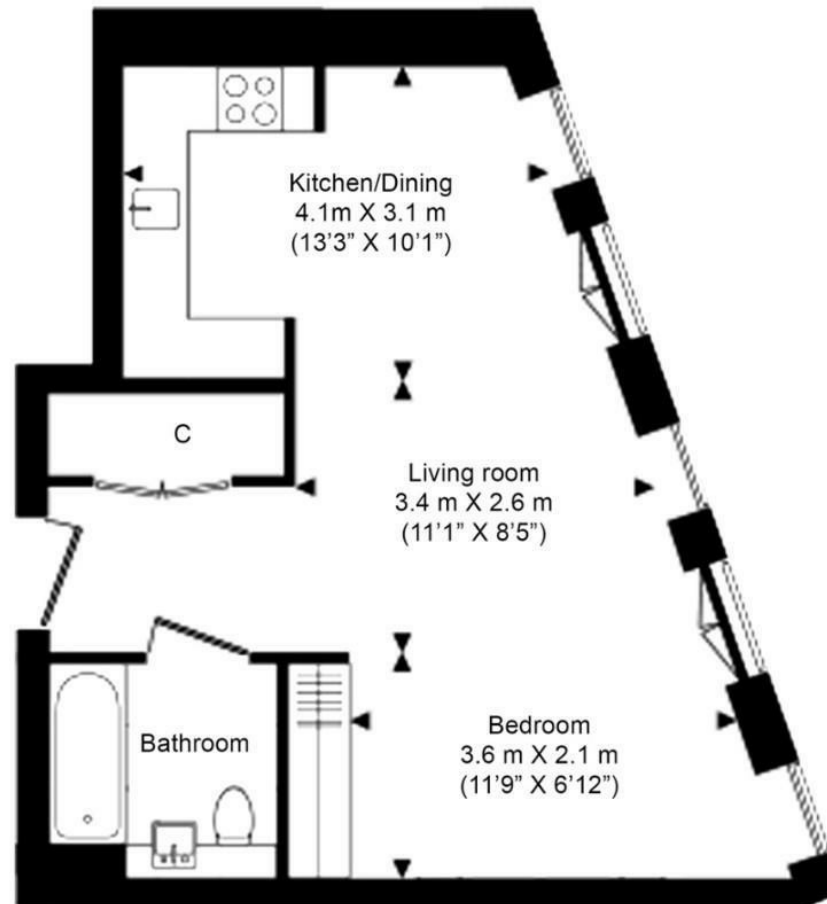
EPC — B(82)

- Desirable Studio In WC1X
- 450sqft (42sqm)
- Furnished
- Resident's Gym
- 24-Hour VIP Concierge Service
- Luxury Swimming Pool And Spa
- Kings Cross Thameslink Station, Russell Square Station & Farringdon Station All Within Half A Mile Away
- Available 22/9/2025
- EPC — B(82)



EPC certificate available on request.

**Ground Floor**  
**Total Gross Internal Area**  
42.0 Sq/m - 450 Sq/ft



Floor Plan measurements are approximate and are for illustrative purposes only. While we do not doubt the floor plans accuracy, we make no guarantee, warranty or representation as to the accuracy and completeness of the floor plan.

